

東京測定器材

Tokyo Sokuteikizai

Main Customers

-Machine Tool-

DMG MORI / YAMAZAKI MAZAK /
OKUMA / FANUC / MITSUBISHI ELECTRIC /
AMADA / NACHI-FUJIKOSHI / JTEKT /
MAKINO / OKK / TSUGAMI

-Telecommunication Equipment-

PANASONIC / JAPAN RADIO /
GOYO ELECTRONICS

-Medical Equipment-

CANON / HITACHI / OLYMPUS /
OMRON / SHIMADZU

-Measuring Instrument-

YOKOGAWA / SONY /
TOKYO KEIKI / JEOL

Please visit
our corporate video



We got interviewed
by the Tokyo Metropolitan Government
[A company of great quality]



History

Since our founding in 1961, Tokyo Sokuteikizai Co.,Ltd. has been endeavoring to manufacture high quality products, to meet the various demands of our clients for manual rotary switches and manual rotary encoders. We have been manufacturing products to our customer's specifications, even if it was a single switch. Our products are used in wide range of machines and devices, such as the control panels for machine tools, control units of medical devices and measuring instruments, switches for telecommunication equipment and audio devices, etc. or for any interface between people and machines. We take pride in our proven quality and durability. We also strive to make our clients products more profitable and safe.

Establishment: Nov. 1961

Quality / Environmental Activities

- We make top priority to continually improve the quality
- To meet or exceed our customer's quality expectations

We are ISO9001 certified since 2000.

All divisions including manufacturing, sales, development, administration, and quality control department set goals for quality based on our Company Quality Policy. We pledge to constantly improve our product quality.

Company Quality Policy:

We will develop and advance products that can anticipate and satisfy the demands of our customers.

We will work by following the rules in conformance with ISO9001:2008.

We will supply reliable products by "building in quality" at every stage of design, development, production and after-sale services.

We will strive to improve the quality of our products and processes by monitoring and reviewing customer feedback and the effectiveness of our operations.

In May 2005, we acquired ISO14001 certification with the aim of going green, and thus increased our trust with our local residents, customers, employees, and shareholders in our environmentally friendly production processes.

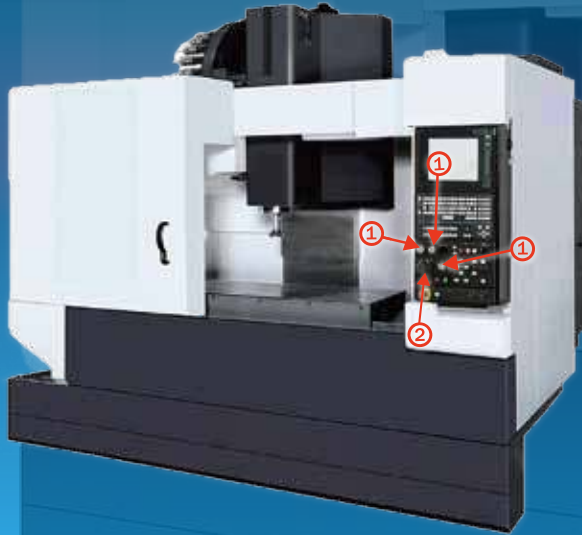
To reduce our carbon-footprint, we installed a solar panel power system on our roof which provides 20% of our facilities power requirements.





Machine Tool

Tosoku holds majority market share in Japan.



Multi-Tasking Machine

①DP switch Axis/Magnifications



HR : Handy Manual Pulse Generator



Axis/
Magnifications/
Positioning/
E-Stop



Positioning

②Manual Pulse Generator



Measurement Equipment

Tosoku's small encoder is used in Measurement equipment.

①Rotary Encoder
Parameter setup



Oscilloscope



Electronic Microscope



②Rotary Encoder



Parameter setup



Medical Equipment

Tosoku Products are used in a wide variety of Medical equipment.

Oxygen Concentrator



①Rotary Encoder



Parameter setup

Ultrasonography



②Rotary Encoder



Parameter setup

③Track Ball



Cursor

Product line up

Handy manual pulse generator

HC1



HS



HT



HF



HM



HF3



HR



curl cord



Manual pulse generator

RE46



RE47



RE45T/V



RE45B



Code switch

DP/DP5



PG



RE45T/V



Rotary switch

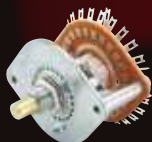
MR8A



RS700/LS700



RS300



RP7X



RS400



RP8XU



RS500



RP9Y



RS113



Rotary encoder

RE19



RE24



RE21



RE25



RE23

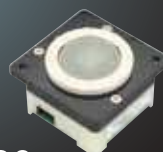


RE29



Track ball

TB36



Knob

Knob



For more details please visit
www.tosoku-inc.co.jp/en/



Tokyo Sokuteikizai Co.,Ltd.
8-3-4 Shin-machi, Ohme-shi, Tokyo 198-0024
TEL: +81-428-31-2321
FAX: +81-428-31-2325
<http://www.tosoku-inc.co.jp/en/>